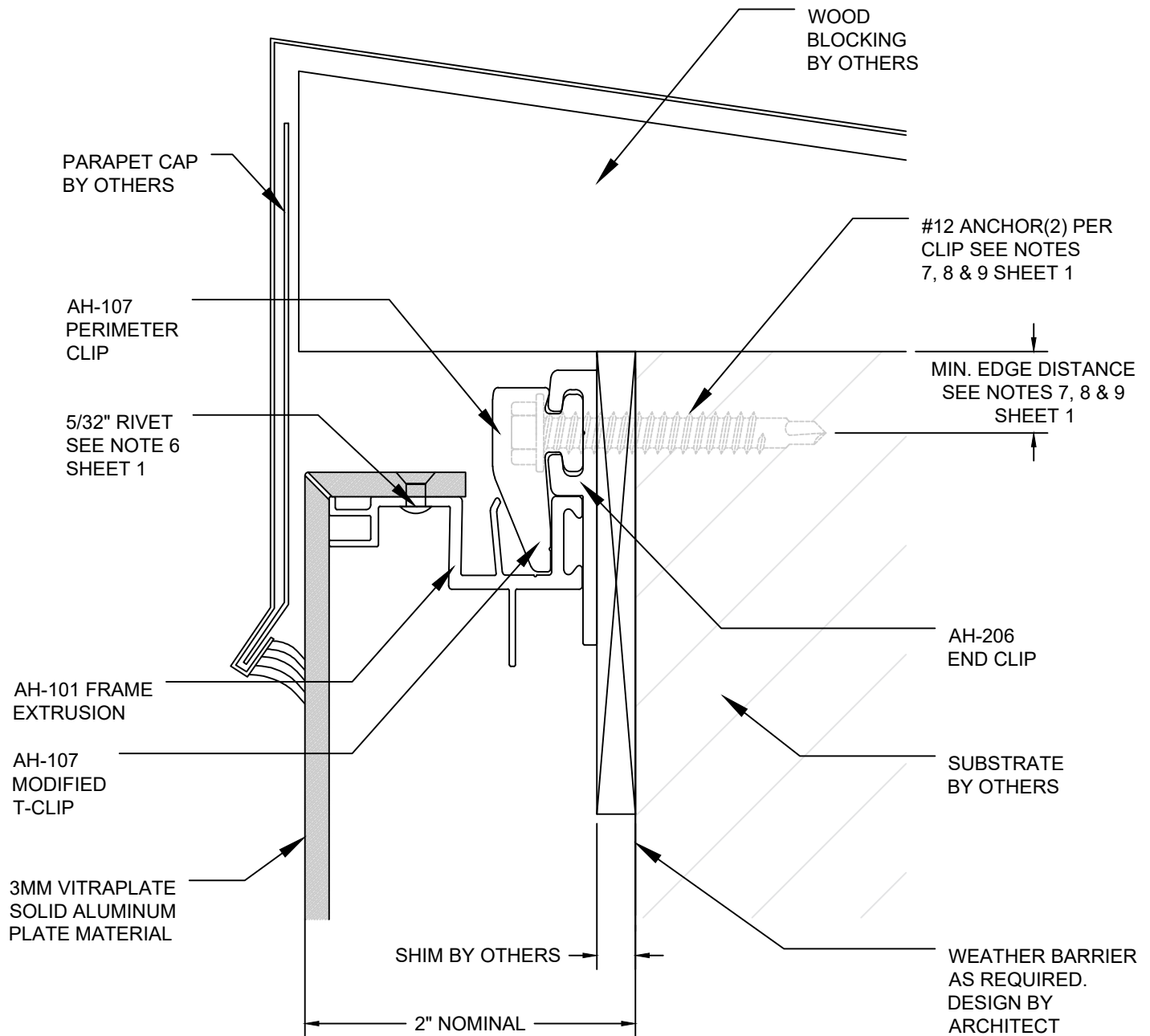


IF SELF TAPPING SCREWS  
PENETRATE WEATHER  
BARRIER, THESE LOCATIONS  
MUST BE SEALED.

#10 X 3/8" SELF TAPPING  
SCREWS MAY BE USED WITH  
EXTERIOR INSULATED WALLS.



Sheet  <b>7</b>	Drawn By JSJ Date Drawn 10/12/23 Revisions No 1 Date 1/18/21 No     Date	Project Number  DWG-01	Project  ARROWHEAD FLEX PARAPET DETAIL CLIP INSTALLATION  © Copyright Fairview Architectural LLC - Patented and/or Patent Pending	 www.fairview-na.com
-----------------------	--	------------------------------	--	--